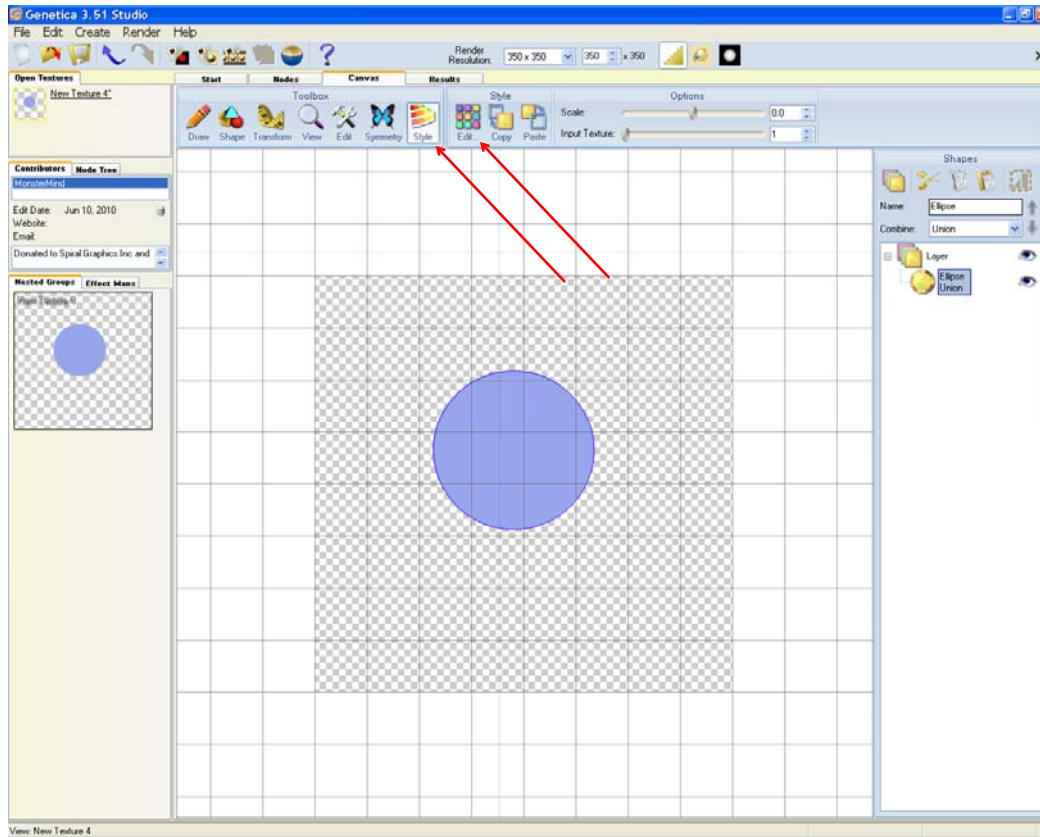


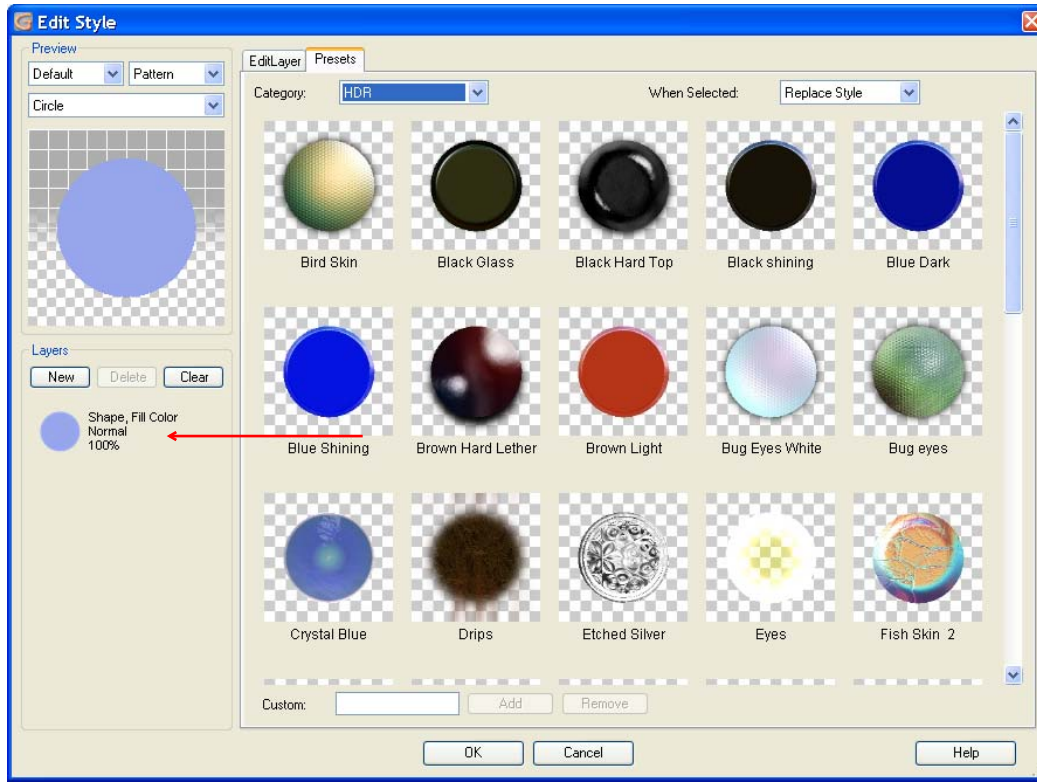
Creation of Style Presets

Start in Canvas a layer by creating a design

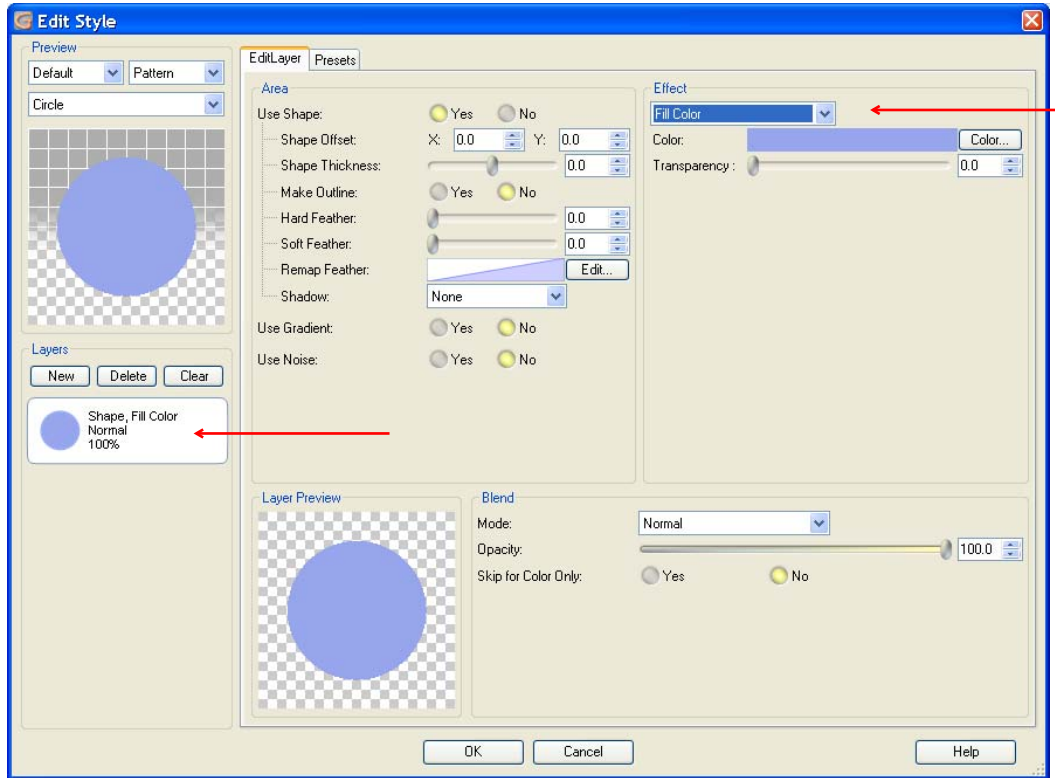
Click on “Style” >> “Edit” buttons.



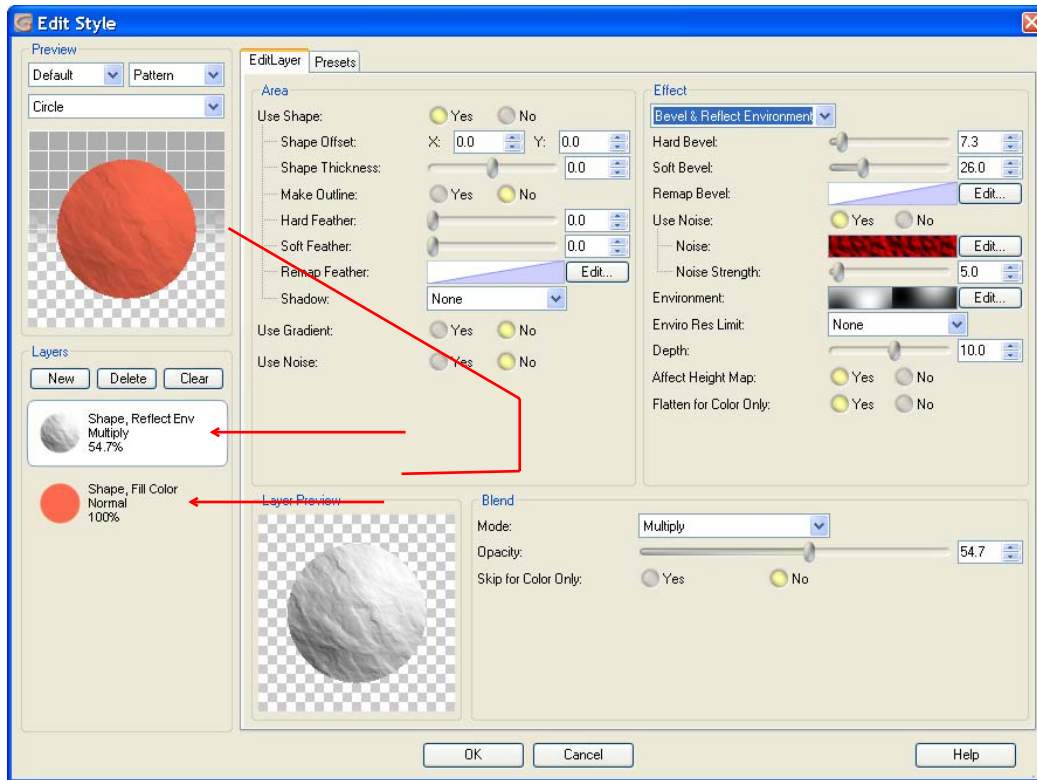
The “Edit Style” page appears with a light blue component.



By selecting this component the “Effect” dialog appears. One has a variety of choices at this point each choice providing different style possibilities.

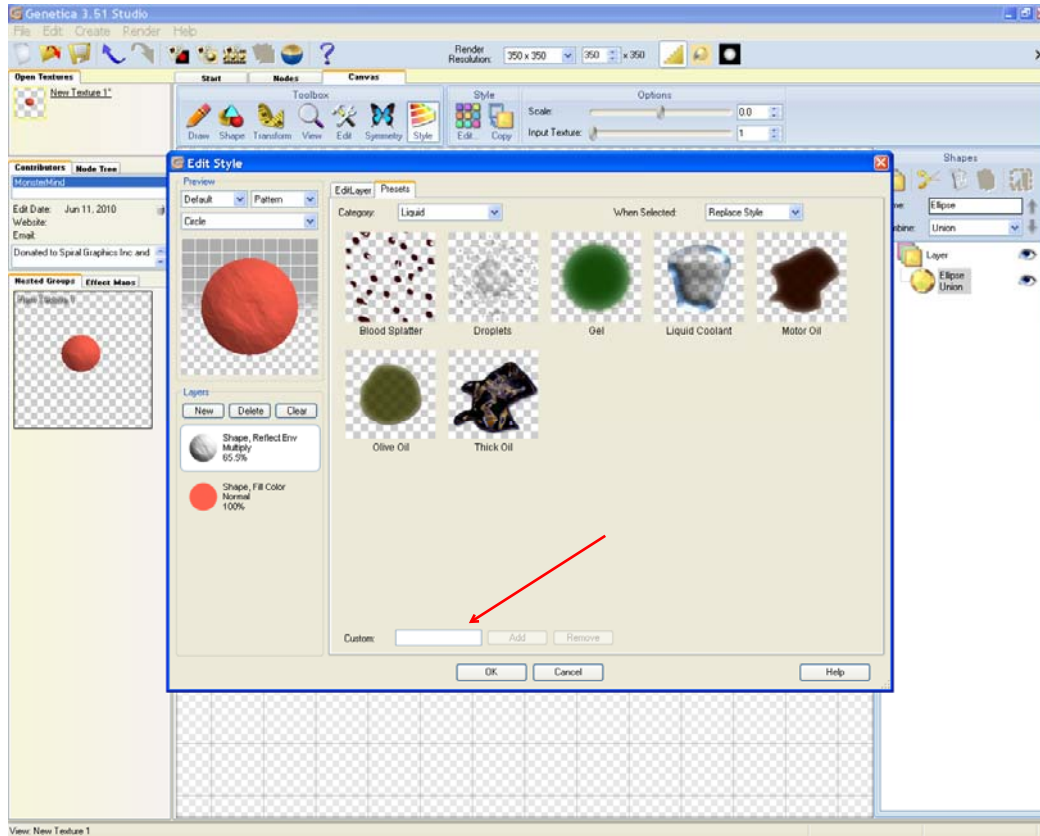


One can add new components and assign additional effects. The combination of these components gives the final appearance of the style.



One can save the final style on a previously created private subfolder that can be read by Genetica . The private subfolder's locations should be at:

C:\Documents and Settings\”Your User Name”\My Documents\Genetica User Files\Genetica 3.5.1\Style Presets\”Name of the subfolder”



One can also create (or modify existing) environment mappresets and save them for later use here:

C:\Documents and Settings\\"Your User Name"\My Documents\Genetica User Files\Genetica 3.51\Environment Map Presets\"Name of the subfolder"

First select the component and the "Bevel and Reflect Environment" effect and then "Edit" environment.

